

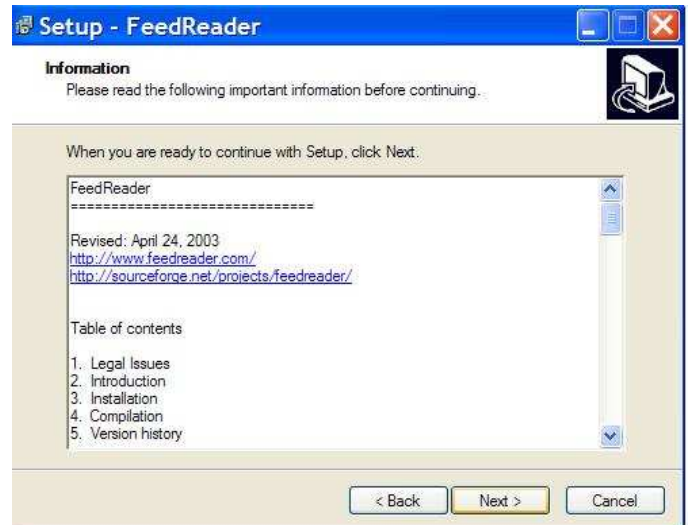
Overview: *FeedReader* for Windows Installation, Configuration and Use.

Installing Your Reader

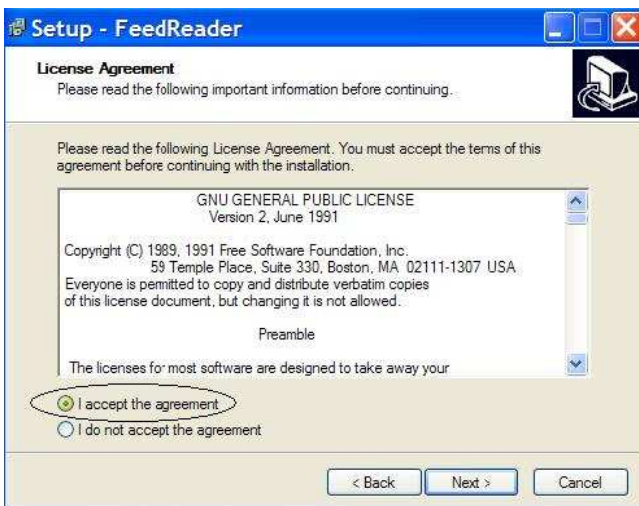
Step 1: Find the installation file you downloaded and double click it. The screen below will display. Click on the "Next" button.



Step 3: This screen is information related to *FeedReader*. Click "Next."



Step 2: Click on the "I accept..." radio button and then "Next."



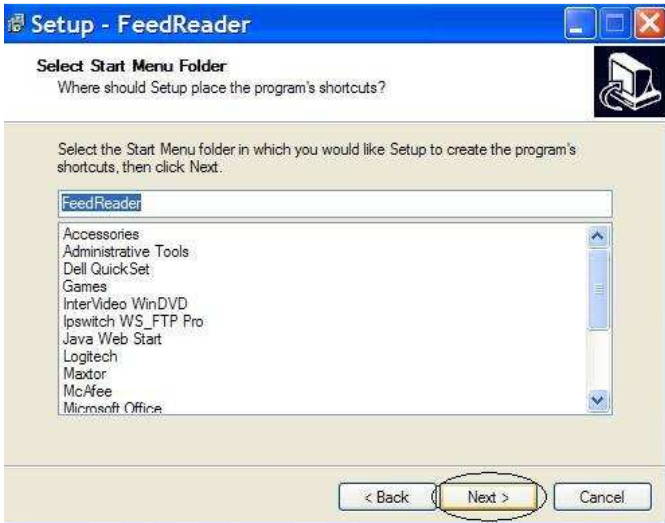
Step 4: Click "Next," or choose another install folder and then click "Next."



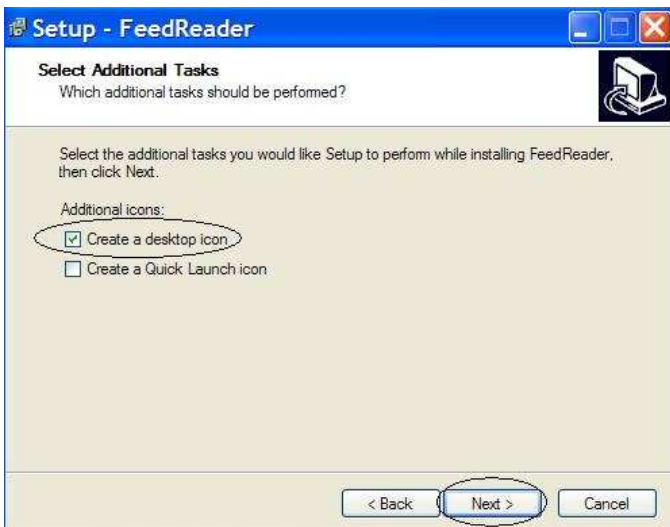
Step 5: If your folder does not exist, the program will create one for you. Click “Yes” and then “Next.”



Step 6: Click “Next” to choose the default program shortcuts.



Step 7: Choose “Create a desktop icon,” then click “Next.”



Step 8: This is a summary screen. Click “Install.”

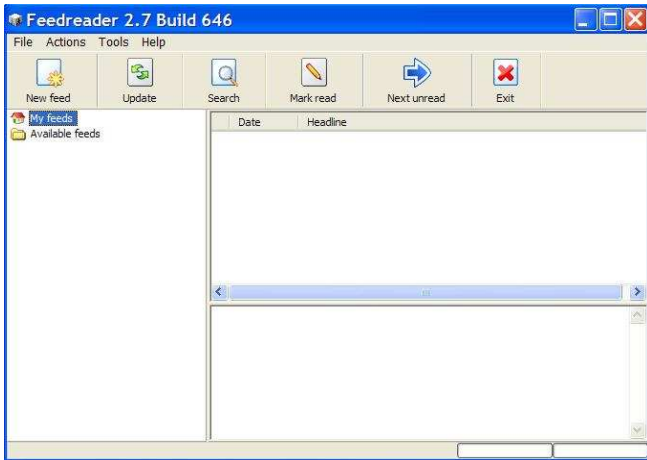


Step 9: The install is complete. Click “Finish,” and the *FeedReader* application will open. Follow the steps outlined in *Configuring Your FeedReader*.

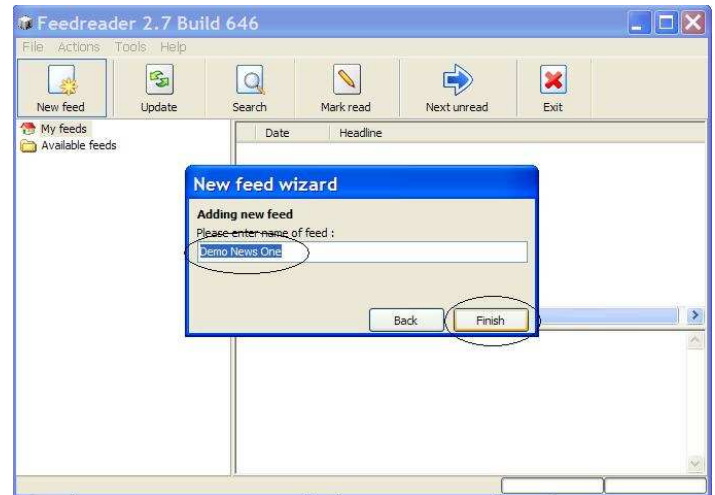


Updating Your *FeedReader*

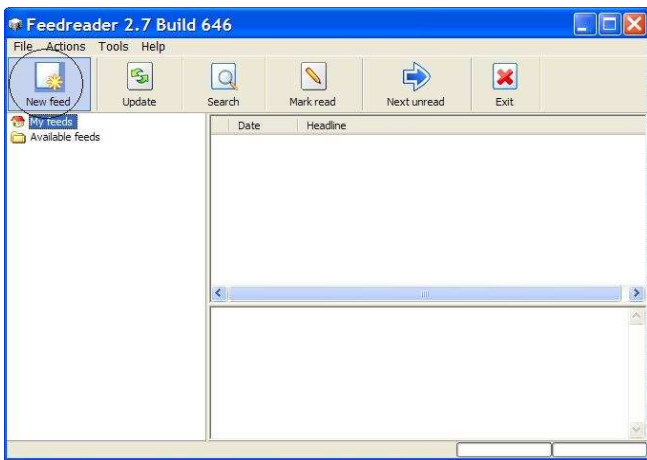
Step 1: Once you have completed the installation, the *FeedReader* application window will open.



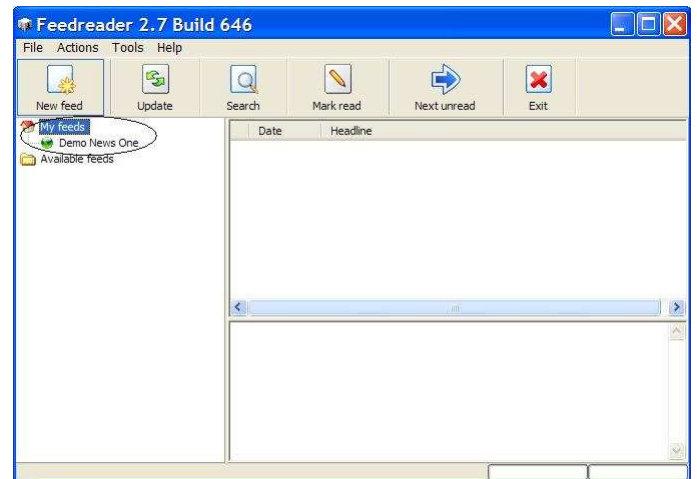
Step 4: A default newsletter name will appear. Click "Finish."



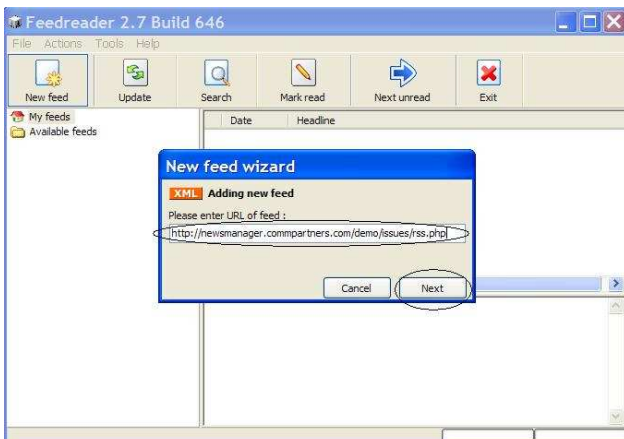
Step 2: Click on "New Feed" icon.



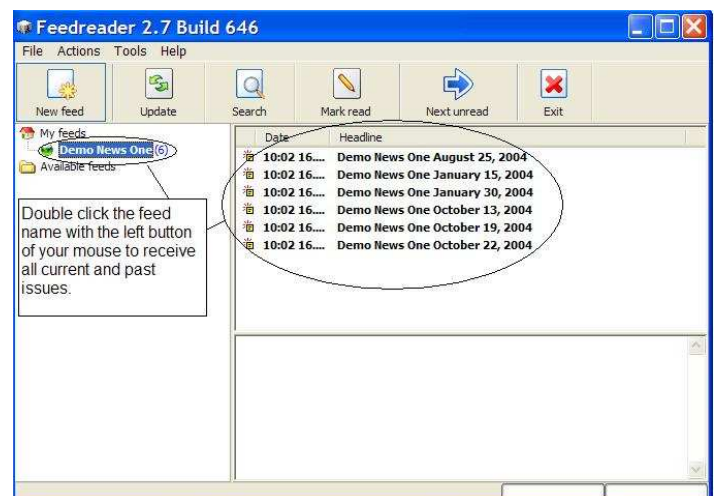
Step 5: Now you are ready to update your newsletter feed. Hold your mouse over the name of the newsletter and double click your left mouse button.



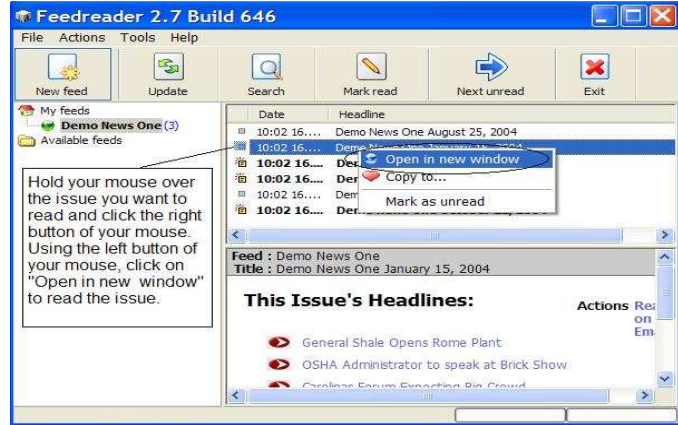
Step 3: This will open the New Feed Wizard. Type the full web address found on the RSS subscription page from which you subscribed. (The address below is an example only.) Click "Next" when finished.



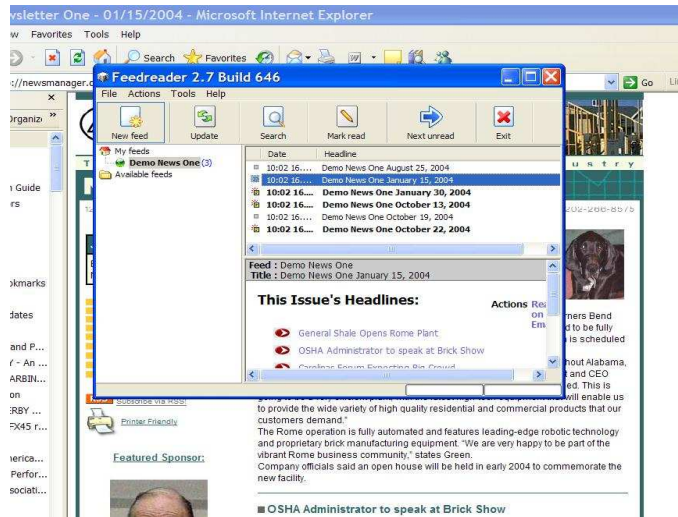
Step 6: Your reader will capture all current and past newsletter issues.



Step 7: To read an issue, hold your mouse over an issue and right click your mouse. A drop down window will appear. Hold your mouse over the “Open in new window” option and click your left mouse button once. This will open the issue in a new browser window.

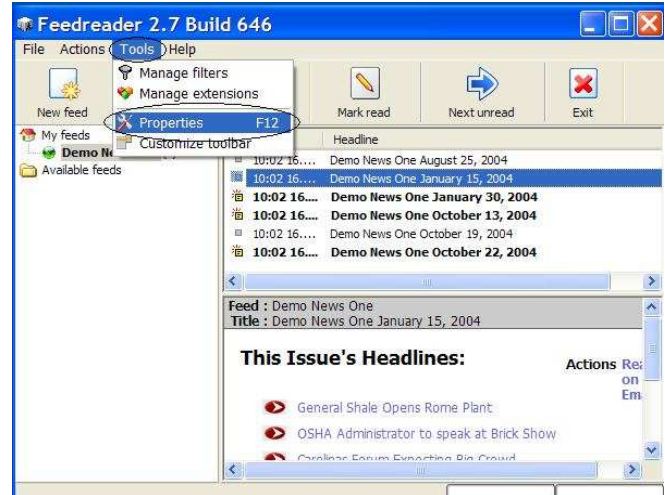


Step 8: Your issue window will appear behind your FeedReader window. Simply click on the window and enjoy your issue.

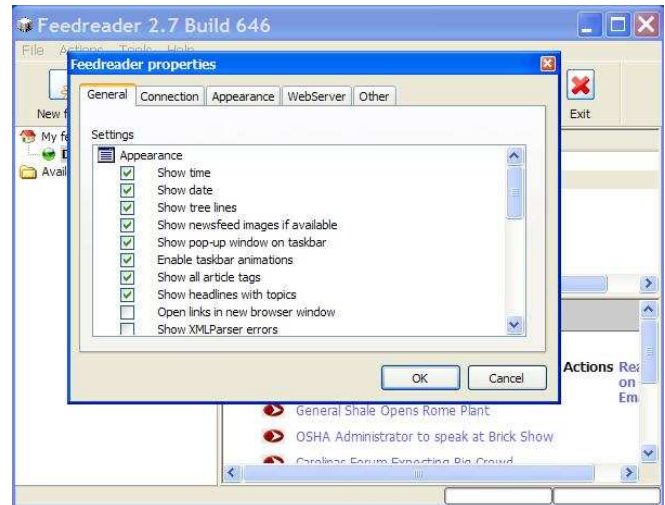


Configuring Your FeedReader

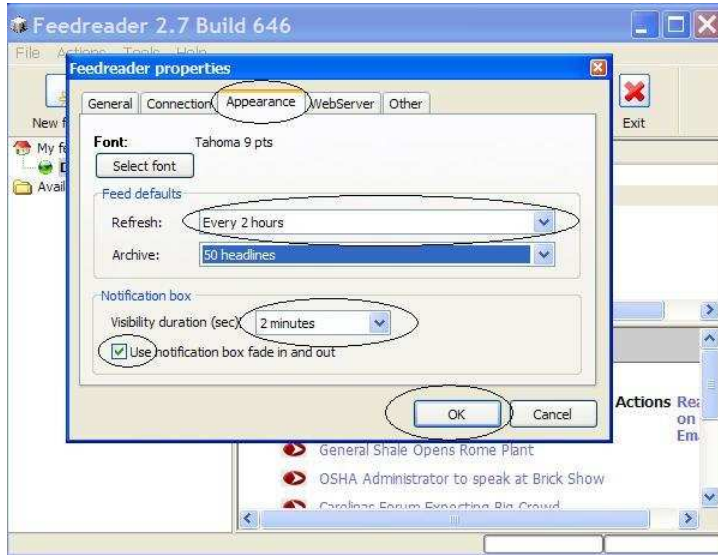
Step 1: To configure your FeedReader, click on “Tools” and then “Properties.”



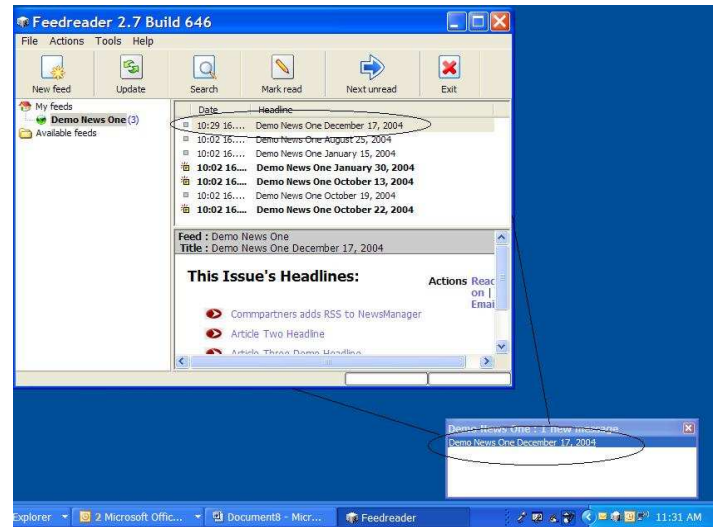
Step 2: You may change any “General” setting, however the defaults work well.



Step 3: Click on “Appearance” and change the refresh to “Every 2 Hours.” Then change “Visibility duration (sec)” to “2 Minutes.” Make sure the option “Use notification box faded in and out” is checked. This will ensure that you are notified whenever an issue is sent. (You may want to periodically check your *FeedReader* icon found in the system tray to ensure that you did not miss a notification.) Click “OK” when done.



Step 5: Double click the link and your *FeedReader* window will open. Right click the issue and choose “Open in New Window” to read the issue.



Miscellaneous Information

The *FeedReader* icon will appear on your desktop...

Step 4: When a new issue is sent to your *FeedReader*, this message window will appear just above your system tray in the lower right hand corner of your screen.



...and in your system tray....

